



P O Box 11-706, Manners Street, Wellington, NZ

Website: [www.cnw.org.nz](http://www.cnw.org.nz)

[office@cnw.org.nz](mailto:office@cnw.org.nz) (General enquiries)

[newsletter@cnw.org.nz](mailto:newsletter@cnw.org.nz). (Newsletter items)

**Community Networks Wellington Newsletter  
November / Whiringa-ā-rangi 2025**

**Community Networks Wellington November Network Meeting  
Wednesday 19 November / Whiringa-ā-rangi 2025**

Nau mai, haere mai!

Kei te tino karangahia koe / You are warmly invited to our  
November / Whiringa-ā-rangi Network Meeting

Join us for a full network round

Do you have a new service, resources or an event you would like to promote?

Are you struggling with an issue that may be affecting others in the sector?

Or would you like to promote your day to day mahi?

Come and join the korero.

Date: Wednesday 19 November 2025

Time: 11am—12pm (join us for morning tea from 10:40am)

Venue: St Peters Church 'Garden Room' 211 Willis Street (Entrance is on Ghuznee Street)

To RSVP click here: [19 November 2025 Network Meeting](#)

For more information contact Debbie Delaney

by email at: [office@cnw.org.nz](mailto:office@cnw.org.nz) or visit [www.cnw.org.nz](http://www.cnw.org.nz)

## COMMUNITY NETWORKS WELLINGTON HOME PAGE

### Upcoming Radio Shows

**5 November 2025**—[Epilepsy First Aid](#)- Host Maddie Clarke speaks with Krystal Crimmins Founder of Epilepsy First Aid, about the services and resources she offers (**Replays 12 November 1.30pm**)

**19 November 2025**—[WCC](#) (on the City Safe Plan)- Host Maddie Clarke speaks with WCC about the City Safe Plan (**Replays 26 November 1.30pm**)

**3 December 2025**—[Dementia Wellington](#)— Host Judith Parkington speaks with Dementia Wellington (**Replays 10 December 2025**)

Join us at 1.30pm, (every second Wednesday) on [Wellington Access Radio](#) 106.1FM

Listen to previous shows :

<https://www.cnw.org.nz/nga-whakahirahira-a-nga-mema--members-highlights.html>

If you would like to be involved in our radio show contact [office@cnw.org.nz](mailto:office@cnw.org.nz)

---

### THE WELLINGTON CITY MISSION 'COMMUNITY CONSCIOUS' CATERING SERVICE

The Wellington City Mission launched **Craig & Gail's Community Conscious Catering in May 2025**, a new catering service dedicated to making a difference in our community.

The service operates in collaboration with Yellow Seat and provides high-quality catering options for businesses, events, and community groups.

The proceeds from every order will directly fund the Wellington City Mission's essential work in the Wellington region, including the operation of Craig and Gail's Café – The Mission's 'contribute what you can' café based at Whakamaru in Mount Cook.

**Murray Edridge**, Wellington City Missioner/He Manu Taupua, said: *"When you order catering with Craig & Gail's, you'll receive delicious kai for your event or meeting – but it's also a chance to contribute to something bigger. 100% of the proceeds come back to*

*The Mission and enable us to provide essential services to those who need them most."*

Customers can order via the website <https://catering.wellingtoncitymission.org.nz/>

The menu features a range of items, from sandwiches and baguettes to desserts and snack platters, all of which are prepared in Yellow Seat's professional kitchen at Whakamaru.

Craig and Gail's Community Conscious Catering has been designed to cater for any occasion. Whether for an office morning tea, an important boardroom meeting or a special event of any kind, the service provides a range of options to suit different needs and group sizes.

Kai options include a range of sandwiches, baguettes, sweets and snacking platters.

All orders will be delivered fresh from the kitchen at Whakamaru by Wellington City Mission volunteers.

To further reduce waste and support those in need, volunteers will also return upon request to collect any leftover food, ensuring it is redistributed to members of the community who would benefit from it. Customers simply need to let the Craig & Gail's team know if they have surplus food after their event.

This catering service builds on the success of Craig & Gail's Café at Whakamaru, the Wellington City Mission's busy, thriving café in Mount Cook. The café, which operates under a 'contribute what you can' model, is catered by Yellow Seat and is open for the general public Monday-Saturday.

[Find out more here](#)

---

**100% of the proceeds from every order go to the Wellington City Mission**

### ENSURING OUR CHILDREN TRAVEL SAFELY

Porirua City Council road safety coordinator, Paulette Pavelich, says a car seat or booster seat is one of the most used pieces of equipment a parent owns, but many might not realise they expire between five and 10 years after they're made.

This time last year, more than 160 car or booster seats were collected at Trash Palace after the call went out to drop them off for free.

This November, the programme is running again, with company Seat Smart collecting everything dropped off for recycling.

Car seats sit in the back of vehicles day after day and, with constant acceleration and stopping, and children taken in and out of them regularly, it forces strain onto the straps and base, Paulette says.

"The straps get weak over time and the plastic in the base and back of seats can develop cracks that undermine the effectiveness and strength, so it's important they're replaced.

"After the success we had with the collection scheme in 2025, it makes sense to do this again."

Expired or damaged car seats or boosters can be dropped at Trash Palace, just before the entrance to Spicer Landfill, between 1 and 30 November.

For more information, please contact Paulette on [paulette.pavelich@porirua.govt.nz](mailto:paulette.pavelich@porirua.govt.nz)

Council also holds regular public car seat checks, and the last one for this year will take place on 4 December from 1-2 pm in the parking area next to Onepoto Park on Main Rd, Titahi Bay.

Regular checks start again in February 2026 – keep an eye on the Council's [Facebook page](#) for details.

[Porirua City Council News](#)

---

## **ONLY 6 MONTHS LEFT, ARE YOU READY? LAW CHANGES HUB FOR INCORPORATED SOCIETIES**

**You Must Reregister before 5 April 2026 to continue  
operating as an incorporated society**

Learn about the law changes and find out what you need to do to get reregistration sorted.

To reregister your society needs to:

1. Prepare a constitution and review its operational processes (this may take some time).
2. Hold a general meeting to approve the decision to reregister and the new constitution.
3. Apply to reregister online at [our website](#).

[Reregistration videos and tools](#)

Videos, checklists and other tools to help you with reregistering.

[Check out our reregistration resources](#)

[What happens if your society doesn't reregister](#)

If your society decides not to reregister it should either appoint a liquidator or apply to be dissolved before 5 April 2026. If it does nothing it will cease to exist.

[Find out more about the options](#)

[Key changes](#)

How the new legislation affects the way societies will operate, including those that are also registered charities.

[Learn about the key changes](#)

[Committees and officers](#)

The new minimum requirements for committees, specific duties and eligibility criteria for officers. All committee members will be officers under the 2022 Act, and others may be too. Officers must consent to their appointment in writing.

[Find out what is new for committees and officers](#)

[Your society will need a constitution](#)

Your society must provide a constitution that complies with the 2022 Act. The 2022 Act specifies what you must include in your constitution.

[Learn more about constitutions under the 2022 Act](#)

[Reporting requirements](#)

Once your society is registered under the 2022 Act, new reporting requirements apply. The requirements for financial reporting, completing annual returns and notifying us when details change.

[Learn more about the new requirements](#)

[Records you must keep](#)

The details you must record in a register of members. Your committee will also need to make sure it's keeping all other records that the 2022 Act requires.

[Learn more about the records your society must keep](#)

**How you can stay up to date**

We will update the information here on [our website](#) throughout the reregistration period.

You can also choose to receive updates from us directly to your inbox.

[Sign up here to receive updates](#)

If you have any questions or comments about these law changes, you can email us at [engage@societies.govt.nz](mailto:engage@societies.govt.nz).

## NOTICES



### WELLINGTON WOMEN'S HOUSE INVITES YOU TO JOIN US FOR OUR 2025 ANNUAL GENERAL MEETING! - 10 NOVEMBER

Come along to hear updates from our team, learn about our impact over the past year, and connect with others who support safe and affordable housing for women in Wellington.

Everyone is welcome, your presence and support help strengthen our community.

Please register your attendance [HERE](#)

---

### INTERNATIONAL VOLUNTEER MANAGERS DAY - 5 NOVEMBER

Date: Wednesday 5th November

Time: 7.30 - 9.00 am

Venue: BNZ Place Wellington, Whitmore Street

Cost: FREE

It's almost the 5th of November, which means International Volunteer Managers Day is close by!

Each year we celebrate volunteer managers who do so much of the unseen mahi to keep programs running, support their amazing volunteers and serve our community.

This year the theme is Be Bold.

Make Change and we hope you will join us for breakfast so we can take a collective moment to celebrate, relax and reflect.

[Find out more here](#)

## SUSTAINABILITY TRUST EVENTS IN NOVEMBER

### November Just Sew:

- Saturday, November 1<sup>st</sup> 2025
- 1pm – 4pm
- Te Aro Zero Waste Centre

Book online and come along to our November Just Sew session for 2025. Repairing rather than buying new is a great way to take climate action in your own life – and learn new skills along the way.

Our skilled volunteers will be here to assist you with fixes such as missing buttons, tears, holes, hemming, and basic alterations. There will also be a DIY table for those who are confident at sewing alone but may not have access to a machine at home. [Find out more here](#)

### Menstrual Mates:

- Saturday, November 1<sup>st</sup> 2025
- 10am – 12pm
- Te Aro Zero Waste Centre

Drop in for a morning of making reusable period products, kōrero and empowerment. With opportunity for everyone to get involved, experience is not necessary. [Find out more here](#)

### Upcycle your Wardrobe - make it yourself!

Saturday, 8 November 2025

10:30 am 1:00 pm

Sustainability Trust

Are you an upcycler of fashion and looking for new ideas? Or have you seen it before and want to give it a go! Back by popular demand, Dave Roil is leading another inspiring workshop full of creative ideas for transforming garments, curtains, and other everyday materials into unique, wearable pieces. [Find out more here](#)

### Te Aro Zero Waste Repair Cafe

Saturday, 15 November 2025

1:00 pm 4:00 pm

Te Aro Zero Waste

Come along to our final Repair Cafe for 2025!

[Find out more here](#)

### Community Clean up:

- Wednesday, November 19<sup>th</sup> 2025
- 12pm – 1pm
- Te Aro Zero Waste Centre

Join us for our monthly community street clean in Wellington!

Let's unite to kick trash to the curb and beautify our streets. [Find out more here](#)



# Whakamaru

FIRST BIRTHDAY CELEBRATION  
A FAMILY-FRIENDLY COMMUNITY EVENT

 SATURDAY 1 NOVEMBER  10AM – 3:30PM

 WHAKAMARU, OXFORD TERRACE, MOUNT COOK

FOOD & COFFEE STALLS

LIVE PERFORMANCES

ACTIVITIES FOR TAMARIKI

## PLUNKET IN THE NEIGHBOURHOOD (PIN) GROUPS

Life with a new baby can feel like a big adventure, and it's always easier with others! Come along to several relaxed sessions where you can meet other parents/caregivers with pēpi aged 0–6 months, share stories, and build friendships that last beyond the baby stage.

Groups for Term 4 start in November, and are free to attend. For more information and to book, please click on the links below:

[Brooklyn, Berhampore and Bays](#)  
[Karori](#)  
[Kilbirnie](#)  
[Newtown and Hataitai](#)  
[Miramar](#)

Drop-in Groups

Pop in for a coffee and meet other parents/ caregivers – no booking required!

[Johnsonville](#) (weekly)  
[Johnsonville Chinese Group](#) (monthly)  
[Wellington Central](#) (monthly)

Interested in volunteering at one of our groups?  
Email [toria.maus@plunket.org.nz](mailto:toria.maus@plunket.org.nz)

---

## WHAIMANA SUPPORTED DECISION MAKING

Whaimana – Support My Decisions is a new website that helps people support others to make their own choices, large or small.

Decision-making can be affected by brain injury, dementia, disability, mental distress, or neurodiversity.

Whaimana – Support My Decisions ([supportmydecisions.nz](http://supportmydecisions.nz)) offers practical guides and examples for families, friends, carers, and service providers. Topics include choosing a supporter, gathering information, and focusing on what matters most to the decision-maker.

Developed by Whaikaha – Ministry of Disabled

People with input from the Office for Seniors and a community advisory group, the site promotes supported decision-making as a positive, rights-based approach.

Find out more about supported decision-making [here](#).

---

## VOTE FOR 'THE NATIONAL COUNCIL OF WOMEN NZ' LISTENERS CHOICE AWARD!

The National Council of Women NZ podcast, Conversations with Wahine, has been nominated for the NZ Podcast of the Year Award.

We would love if people could vote for the Listeners Choice Award!

You can find out more information on our facebook page here:

<https://www.facebook.com/share/p/1GbNpCP1fZ/>

And vote for us here:

[New Zealand Podcast Awards - Home](#)

Voting closes on 15 November

---

## VINCENTS ART WORKSHOP ANNUAL GENERAL MEETING -17 NOVEMBER

Tēnā tatou katoa. We would like to extend an invitation to attend our Annual General Meeting on Monday November 17th at 5:30pm, at Vincents Art Workshop, Willis St Village, 5/148 Willis St.

The agenda will include the adoption of the annual report, the annual financial report, the election of six community representatives to the governance committee and confirmation of the elected artist representatives, followed by any items of general business.

If you are interested in putting yourself forward for the committee, please send an email to [chair@vincentsart.org](mailto:chair@vincentsart.org) with a brief introduction to yourself, and what you could bring to the committee.

We are particularly looking for a candidate for the position of Secretary, responsible for taking minutes of committee meetings, and advising of meeting and agendas.

Everyone is welcome to attend. Light refreshments will be served.

RENOWN ECONOMIST SHAMUBEEL EAQUB  
PRESENTS

# STATE OF THE ECONOMY

TRENDS & DECISIONS DRIVING THE OUTLOOK



## WARNINGS

Stock market crash!

## HUMAN STRUGGLE

NZ cost of living crisis



## HOUSEHOLD

Living costs increase

## SILVER & GOLD

Why is the price skyrocketing?

Do you have these

**Questions**  
Come and find  
out more

Date: 4 November 2025  
Time: 5.30 - 7:00 pm  
Venue: St Peter's Church,  
211 Willis Street

Light refreshments will be served.



एक्ता न२



Ekta invites you to join us to hear renown economist Shamubeel Equb speak on the "State of the Economy: Trends and Decisions driving the outlook" on 4 Nov at St Peter's Church 5.30-7pm

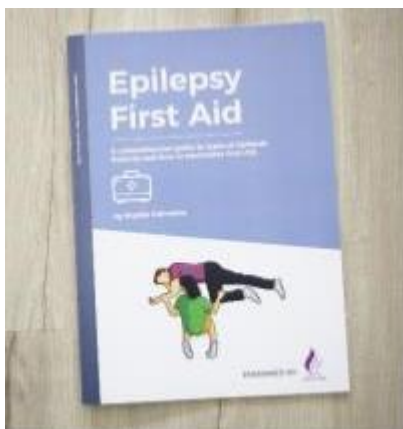
## NOVEMBER EPILEPSY AWARENESS MONTH



Epilepsy First aid is a social enterprise and has been running for eight years and provides information and advocacy about what to do when someone has a seizure and what to do in a first aid situation.

I do speaking events and workshops that run for an hour to workplaces, schools and anyone who wants to know about Epilepsy in general. I come from a lived experience rather than doctor/nurse experience.

I have a children's book Snowy's Talent and Epilepsy first Aid book for sale and if you would like any further information on my services offered please go to my website



[www.epilepsyfirstaid.com](http://www.epilepsyfirstaid.com)

I will be speaking with CNW on Access Radio on 5 November at 1.30pm to hear about my services.

[Wellington Access Radio](http://Wellington Access Radio) 106.1FM

## AWARENESS DATES

### NOVEMBER / WHIRINGA-Ā-RANGI

**November Men's Health Month** <https://nz.movember.com/>

**Diabetes Action Month** <https://www.diabetesactionmonth.org.nz/>

**4 November 2025—Purple Tuesday.** Purple Tuesday is an annual event dedicated to promoting accessibility and inclusivity for disabled consumers. This day serves as a reminder of the importance of making businesses and public spaces more accessible to disabled people. <https://purpletuesday.co/>

**5 November - Guy Fawkes Night** <https://dayspedia.com/nz/calendar/holiday/630/>

**12 November—World Pneumonia Day** <https://stopppneumonia.org/about-us/>

**13 November—World Kindness Day** <https://dayspedia.com/nz/calendar/holiday/195/>

**13—19 November Transgender Awareness Week** <https://glad.org/transweek/>

**14 November World Diabetes Day** <https://dayspedia.com/nz/calendar/holiday/538/>

**16 November— International Day of Tolerance** <https://www.unesco.org/en/days/tolerance>

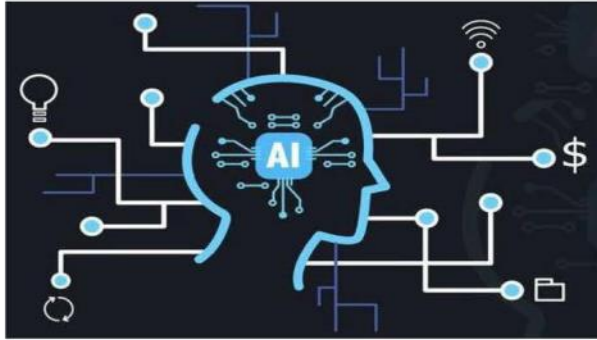
**20 November—Transgender Day of Remembrance** an annual observance that honors the memory of the transgender people whose lives were lost in acts of anti-transgender violence. <https://glad.org/tdor/>

**20 November—World Children's Day** <https://www.un.org/en/observances/world-childrens-day>

**25 November—White Ribbon Day** <https://whiteribbon.org.nz/>

**25 November—International Day for the Elimination of Violence against Women** <https://www.un.org/en/observances/ending-violence-against-women-day>

**26 November—World Sustainable Transport Day** <https://www.un.org/en/observances/sustainable-transport-day>



## **From Curiosity to Confidence: Learn AI Together**

**Join us for a friendly, easy to understand session about Artificial Intelligence (AI) and how it is shaping our daily lives.**

**Wellington** - 8 November 2025 | 1pm – 4pm | Garden Room, St Peter's Church, 211 Willis Street, Te Aro, Wellington.

Register Your Interest Here <https://forms.gle/fHY1cxe1bQjW2szZ8>  
Registrations close 5 November 2025

**Lower Hutt** - 15 November 2025 | 9am – 12noon | Walter Nash Centre | Kereru Meeting Room 22 Taine Street, Taita, Lower Hutt

Register Your Interest Here <https://forms.gle/fHY1cxe1bQjW2szZ8>  
Registrations close 12 November 2025

**Porirua** - 22 November 2025 | 9am – 12noon | City Hub, 7 Serlby Place, Porirua City Centre. Register Your Interest Here <https://forms.gle/fHY1cxe1bQjW2szZ8>  
Registrations close 19 November 2025

### **You will learn:**

- What AI is and where you already use it**
- How to stay safe from online misinformation**
- How AI can help with day to day activities**
- How to feel more confident and included in our digital world**

**Refreshments provided**

*(Copy and paste the link into your browser to complete a registration form, so we can send you information before the seminar)*

## EMPLOYMENT OPPORTUNITIES

### JOIN OUR TEAM MENTORING COORDINATORS WANTED! LOWER HUTT & TAWA

Big Brothers Big Sisters of Wellington is growing!



**Big Brothers Big Sisters  
of New Zealand**

*Tuakana Teina*

We're excited to announce two opportunities to join our passionate team supporting tamariki and rangatahi across the region.

We're currently recruiting for:

- **Mentoring Coordinator – School-Based Teen Programme (Tawa)**
- **Mentoring Coordinator – Lower Hutt**

Both roles play a key part in helping local young people thrive through friendship, guidance, and support.

Our Mentoring Coordinators work alongside volunteers, schools, and whānau to create and nurture positive mentoring relationships that truly make a difference.

We're looking for people who are empathetic, organised, and great communicators — those who love seeing young people reach their potential and want to be part of a small, supportive team doing meaningful mahi in the community.

If you (or someone you know) is passionate about supporting our next generation, we'd love to hear from you!

[Mentoring Coordinator - Lower Hutt](#)

(Hybrid) part-time (20 hours per week)

Applications close 5 pm, Friday 21 November 2025

[Mentoring Coordinator - School Based Teen - Tawa](#)

(Hybrid) part-time 20 hours per week, during term time for 35 weeks.

Applications close Thursday 20 November 2025

[Find out more about us here](#)

### WELLINGTON CITY MISSION MANAGER – DONOR ENGAGEMENT & PARTNERSHIPS—FULL TIME

About the role

This senior leadership position is about much more than fundraising – it's about relationships. The Communications, Insights and Fundraising Team at Wellington City Mission builds the trust and connections that sustain the Mission financially. Through storytelling, vision casting, and genuine human connection, they invite people to join them in building a community where every person can experience empowerment, transformation, and fullness of life.

As Manager – Donor Engagement & Partnerships, you'll provide strategic direction and people leadership, guiding a small team to engage donors and partners in authentic, values-driven ways. You'll ensure that relationships are built first, stories are shared meaningfully, and opportunities are created to align generosity with what matters most – both to supporters and to the Mission.

Applications Close 5 November

[Read full job description here and find out how to apply.](#)

---

### TAKE 10 TEAM LEADER - CASUAL ROLE VULNERABLE SUPPORT CHARITABLE TRUST

Primary duties of the role:

- Running the Friday & Saturday shift at either of the two sites (not required to work every weekend)
- Ensuring the team and visitors to Take 10 are safe and cared for
- Liaising with the WCC Camera security team, and Security Liaison Officers, as well as police patrolling Courtenay Place
- Supporting the Take 10 team through the evening, this includes coordinating meal breaks and making sure the team has a safe way to get home after the shift.

Hours of the role:

This is a casual role, the hours are 9.45 pm – 3 am Friday & Saturday nights - you are not required to work every weekend..

[Find out more or Apply here](#)

# DEAF AND HARD OF HEARING EXPO 3



Saturday 15 November 2025,  
10am - 3pm

Lower Hutt Events Centre

30c Laings Road, Hutt Central, Lower Hutt

Free entry.  
All are welcome.



The Deaf and Hard of Hearing Expo 3 is a vibrant community showcase of services, businesses, and products connected to Deaf and Hard of Hearing communities throughout Aotearoa. The event highlights Deaf-led businesses and organisations and providers committed to supporting Deaf accessibility, inclusion, and wellbeing.

**Would you like to book a stall?**

Get in touch to find out about our range of pricing options.

Contact: Janine - [deafexpo03@gmail.com](mailto:deafexpo03@gmail.com)

## TRAINING OPPORTUNITIES

### SUPPORT SERIES - FOR THOSE WORKING WITH MALE SURVIVORS OF SEXUAL ABUSE

Tautoko Tāne is pleased to announce a nationwide series of presentations to support agencies, service providers and professionals to share information and insights about working with male survivors of sexual abuse to get the support they need.

Called Hoake Tātou | Walk With Me, these presentations are designed to bring service providers and support agencies together and supported by the Ministry for Social Development, the presentation series is an opportunity to learn from our experience and strengthen your organisation's ability to support male survivors.

In the Wellington Region, there will be four presentations available.

**Lower Hutt** at the Lower Hutt Events Centre, 30c Laings Road, Hutt Central,  
**11 November 9.30am**

**Porirua** at the Te Rauparaha Arena, 17 Parumoana Street, Porirua City Centre,  
**11 November 2.00pm**

**Wellington Central** at Rydges Wellington CBD, 75 Featherston Street, Pipitea,  
**12 November 10.00am & 2.00pm**

There are many other presentations happening throughout the nation for anyone further afield.

Full information and registration details found [here](#).

Please like, follow, and share the Tautoko Tane [newly launched Facebook page](#).

---

### FROM SAD BLOKES TO WELL MEN: CHANGING THE FOCUS IN MALE SUICIDE PREVENTION ONLINE WORKSHOP SERIES

#### Online workshop delivery

The online workshop format for TaylorMade workshops is delivered via Zoom in modules. A one day in-person workshop is usually delivered online in either two or three modules which are held weekly.

The length of each module is 3 hours.

This workshop will be delivered over three Mondays 3, 10 & 17 November 2025 - 9.30am to 12.30pm.

[Find out more or register here](#)

---

### RETHINKING NEURODIVERSITY UNDERSTANDING AND INTEGRATING A NEURO AFFIRMING APPROACH

DATE Wednesday, 5 Nov 2025

Time 9:00am - 3:00pm

Venue Mövenpick Wellington Hotel, 345 The Terrace, Te Aro, Wellington 6001

Inclusions:

Lunch & Tea Break Catering

Workshop Notes

Certificate

Bookshop at Seminar

Over the past decade technology, academic research, lived experience and community advocacy has changed everything we previously knew about brains. What were once thought of as disorders are now known as a neurotypes. Where we once prioritised early intervention to assimilate towards the 'ideal' way of being, we now focus on 'actualisation', to support authentic ways of being.

[Find out more or register here](#)

---

### MANAGING DIFFICULT CONVERSATIONS TRAINING

Managers, team members, owners and employees in New Zealand need to conduct difficult conversations at some time or another. Although difficult conversations cannot be avoided, they can be successfully managed to achieve positive outcomes.

Understanding, empathy and emotional intelligence skills development are necessary qualities that help you control difficult conversations before, during and after they occur, so that you can achieve the desired outcome. Giving critical feedback or dealing with highly -emotional staff can be a challenge, so we designed this course to help you gain not only the skills, but the confidence to manage them appropriately.

[Find out more or arrange a group session here](#)

A woman with short brown hair and glasses, wearing a bright pink t-shirt and blue jeans, is smiling and holding a purple bowling ball. She is standing on a green lawn in front of a building. The background is slightly blurred.

# BOWLS & BBQ

SUPPORTING  
**BIG BROTHERS BIG SISTERS**

5-9PM  
**NOVEMBER 21ST**

TICKETS FROM  
**BOWLSANDBBQ.CO.NZ**

Find out more or register here <https://www.bowlsandbbq.co.nz/>

## SENIORS TEA & TECH, & SCAM PREVENTION PRESENTATION

Come along to a free technology support session to help you navigate technology, and a scam prevention presentation.

Baffled by technology  
Want to learn how to do Internet banking?  
Need to connect with the grandkids on WhatsApp?  
Come to our free Tea & Tech workshop!

Bring your digital device and get help from some friendly volunteers from AMP.

### Next sessions:

- **5 November, Seatoun Village Hall. Come by anytime between 9.30am and noon**
- **19 November, Cossie Club, Upper Hutt. Come by anytime between 9.30am and noon**

[Register for your preferred venue here](#)

---

## APPLIED CHILD PROTECTION - WEBINAR SERIES

Are you looking to build on your existing child protection knowledge? Our highly interactive, Applied Child Protection course explores the nuances faced when applying this learning to real life situations. You will learn how to apply wise child protection practice in your work; acknowledging there is no “best” way of doing things for all groups.

Gain confidence in handling disclosures, applying information sharing legislation, and engaging with families, while reflecting on personal barriers and how professional dangerousness may look in your work.

Whether you are the designated person within your organisation, a team leader or regularly work with children at risk of abuse and neglect, this course is the next step on your journey to keeping children safe.

Part 1: 12 November | 9:30am – 12:00pm  
Part 2: 19 November | 9:30am – 12:00pm

Just \$160 incl. GST – a worthwhile investment for life-changing knowledge.

Pre-requisite: You must have completed an introductory safeguarding course within the last 2 years (any provider is fine!).

[Register Here](#)

## CHILDREN AND YOUNG PERSONS' PROGRAM COMPANION TRAINING - 21ST AND 22ND NOVEMBER 2025

Train **FACE TO FACE** to become a certified Seasons for Growth Companion in the Children and Young People's Program. This professional development training is delivered over **two consecutive days** by an authorised Trainer and enables educators and professionals to facilitate the Seasons for Growth small group program in their schools or communities.

**Outcomes** Seasons for Growth provides the support and space for children and young people to:

- **Learn** about how different people respond to change, loss and grief
- **Understand** that it is normal to experience a range of grief reactions
- **Explore** new approaches to dealing with change, loss and grief in their lives
- **Build** communication, decision making and problem-solving skills
- **Participate** in a supportive network of peers and adults
- **Integrate** their new learning into their relationships with family, friends and others.

**LOCATION:** St Joseph's School - Levin **DATES:** Friday 21st and Saturday 22nd November 2025 **TIME:** 9:30am until 4pm each day.

**COST:** \$300 (excluding GST) + \$25 subvention fee (for new companions only) + resources (*see section 5 for more information on resource prices*)

[Find out more or register here](#)

---

## \*FREE\* GOVERNANCE MATTERS #10: AI, CYBERSECURITY AND DIGITAL LEADERSHIP

Tuesday 4 November, 6:30pm - 7:45pm via Zoom

### Event description

AI, cyber security and data privacy are significant risks for organisations today. This workshop will explore what are the cyber security risks, what are the organisation's responsibilities with privacy protection and some simple steps to improve your cyber-security and privacy practices.

[Find out more or register here](#)

# HILDY GOTTLIEB

## CATALYTIC THINKING TOUR 2025

*Change How You Listen, Question & Imagine the Future*

*Co-founder of Creating the Future (USA)  
Creator of the Catalytic Thinking method*

**SEE THE [PREVIEW VIDEO](#) HERE**

TĀMAKI MAKĀURAU / AUCKLAND	24 NOVEMBER	9:00AM – 5:00PM	MANUKAU CRUISING CLUB, 2 ORPHEUS DRIVE, ONEHUNGA	ANYONE WHO WORKS WITH OR IN COMMUNITY BENEFIT ORGANISATIONS	PAY-WHAT-YOU- CAN  SEE BELOW  LUNCH PROVIDED
TE WHANGANUI-A- TARA/WELLINGTON	28 NOVEMBER	10AM - 2PM	50 THE TERRACE	COMMUNITY ORGANISATION CAPACITY- BUILDING FACILITATORS	\$250+GST  LUNCH PROVIDED
WHAKATŪ / NELSON	1 DECEMBER	9:00AM – 1:30PM	FAIRFIELD HOUSE, 48 VAN DIEMEN ST, NELSON SOUTH	ANYONE WHO WORKS WITH OR IN COMMUNITY BENEFIT ORGANISATIONS	PAY-WHAT-YOU- CAN  SEE BELOW  LUNCH PROVIDED

### WHAT YOU'LL EXPERIENCE

- Dive into the foundations — social change history + neuroscience.
- Practice Radical Inclusion & Catalytic Listening.
- Use Catalytic Thinking questions in your real work or setting.
- Learn facilitation techniques & ideal conditions.
- Connect with change-makers, facilitators & leaders.

### TAMAKI MAKĀURAU AND WHAKATŪ

Pay-What-You-Can

- Organisations with budgets & NZ\$1m / Gov / Private Sector: NZ\$750–900 (full day) / \$400 (half day)
- Community / voluntary/small NFP / solos: NZ\$300 (full day) / \$150–200 (half day)

### Don't Miss It!

If you or your team ever feel stuck in problem thinking — this is your chance to break out and co-create the future you want.

### Register Now!

- Tāmaki Makaurau / Auckland: <https://events.humanitix.com/catalytic-thinking-auckland>
- Te Whanganui-a-Tara/Wellington: <https://events.humanitix.com/catalytic-thinking-for-capacity-builders>
- Whakatū / Nelson: <https://events.humanitix.com/catalytic-thinking-auckland>



HOSTED BY PRISM CO & LEAD

PRISM

LEAD

CENTRE FOR  
NOT-FOR-PROFIT  
GOVERNANCE & LEADERSHIP

## RESTREAM + LIVE Q&A | EFFECTIVE STAKEHOLDER ENGAGEMENT—12 NOVEMBER

Join our webinar to discover our top strategies for engaging the right stakeholders at the right time. Drawing from extensive experience in complex and sensitive contexts, we'll show you exactly how to map stakeholders, design meaningful engagement, and ensure voices are heard and valued.

This is practical guidance you can apply immediately to improve your stakeholder engagement approach.

### What we'll cover:

1. **Identifying Key Issues** that require stakeholder input
2. **Stakeholder Mapping** to categorise and prioritise key groups
3. **Engagement Design** that encourages early, respectful involvement
4. **Tools & Techniques** for culturally safe, trauma-informed, and ethical engagement
5. **Managing Challenges** with difficult stakeholders
6. **Effective Communication** to keep stakeholders informed and involved throughout the process

### Who should join:

This webinar is ideal for people at all experience levels who engage with stakeholders in a policy, change, review, or evaluation setting.

Wednesday 12 November 2025 | 12:10-12:55 p.m.  
Online

[Find out more and register here](#)

---

## WAKING UP TO WHITENESS - NOT ANOTHER COURSE ON CULTURE

The course aims to provide a forum to explore and discuss what this means for you as a member of Aotearoa/New Zealand society.

We are looking for about 12-15 people to join us. This course has the support of Vic University Diana Unwin Chair of Restorative Justice. The course will be facilitated by [Adreanne Ormond](#) and Madeleine Taylor.

When: 3rd and 4th November 2025 8.45am – 4.30pm

[See full details here](#)

## MH101 WORKSHOP—24 NOVEMBER

Blueprint for Learning will be bringing our MH101 workshop to **Wellington on Monday 24 November**. We have room for more participants and warmly welcome you to register and to share this information amongst your networks. MH101 is free to attend and is full of valuable information, practical advice, and wellness tips to give participants the confidence to recognise, relate and respond to people experiencing mental health challenges. The details are:

### MH101

- Date: Monday 24 November 2025
- Time: 9.00am to 4:30pm
- Venue: Salmond House, 57 Vivian Street, Te Aro, Wellington 6011
- Registration: [Register Here](#)

### About MH101

Blueprint for Learning has funding through Te Whatu Ora to facilitate MH101 online and in-person workshops for frontline government agency staff, social services staff, and members of the community who are not trained in mental health or addiction and are not registered health professionals. Staff and volunteers in these organisations are eligible to attend these free workshops if they are likely to come into regular contact with individuals experiencing mental distress in their day-to-day work. During the workshop you will be supported to:

- recognise signs of mental wellbeing and of mental health challenges
- use Te Whare Tapa Whā to support mental wellbeing
- relate to what people with mental health challenges are experiencing
- respond supportively to mental distress

Our experienced facilitators bring a huge amount of professional and personal experience to the day, running interactive activities and stimulating discussions that bring the learnings to life. Each participant receives a workbook full of reading material and a support directory, plus a certificate of attendance (we have the top NZQA rating).

Access to an e-learning refresher is also provided after the workshop.

More information about the workshop is available on our website: [MH101 Workshops](#)

# Karori Community Centre Annual General Meeting

Wednesday 5 November 2025

Refreshments from 7pm  
Meeting from 7.30pm

Venue: Room 3 Upstairs - Karori Community Centre  
7 Beauchamp Street (behind the Mobil Station)

RSVP 476 4968 [info@karoricommunitycentre.org.nz](mailto:info@karoricommunitycentre.org.nz)

Heather Baldwin  
Chair  
Karori Community Centre  
Management Committee



RSVP Here [info@karoricommunitycentre.org.nz](mailto:info@karoricommunitycentre.org.nz)

# Attachment and Screens

The intersection of attachment, technology, and well-being

A live webinar broadcast with Dr Emma Woodward



Digital devices have become central to young people's lives, but what happens when they become attachment objects for those who have already experienced trauma, loss, and disrupted caregiving?

Join Dr Emma Woodward, child psychologist, researcher, and international speaker, for an engaging seminar grounded in her influential paper 'Screens and Looked-After Teens'. Drawing on attachment theory and real-world practice, Dr Woodward explores how screens both soothe and strain the lives of vulnerable young people who have had limited opportunities for secure attachment.

## This interactive workshop will help you:

- Learn how trauma and insecure attachment styles shape screen use in vulnerable youth
- Recognise both the risks (false self, epistemic mistrust, over-reliance) and opportunities (connection, identity exploration) of screens
- Explore how devices can act as "modern transitional objects" for young people with disrupted attachment histories
- Learn trauma-responsive strategies for supporting carers, educators, and social workers in guiding healthy digital use
- Practice applying strategies that shift focus from reducing screen time to increasing opportunities for safe, relational connection
- Co-create a practical toolkit tailored to your own role and setting

## Who would benefit from attending:

Social workers, carers, youth workers, educators, psychologists, and professionals supporting vulnerable young people in New Zealand.



Dr. Emma Woodward is a Child, Educational and Community Psychologist. She completed her Doctorate in Child, Community and Educational Psychology at the Tavistock and Portman NHS Foundation Trust and an Undergraduate degree in Experimental Psychology from the University of Sussex. Now based in Auckland, Emma established the "Child Psychology Service" (a national child psychology practice network) and is a sought after presenter on a range of topics relating to positive psychology. Emma is also a regular guest on network television providing expert comment on issues to do with child and adolescent wellbeing.

Brought to you by:  
**compass** | 25  
SEMINARS NZ YEARS

## Seminar Details:

- 📅 26 November 2025 9:00am - 3:00pm
- 📍 Delivered via Live Webinar (The webinar link will be emailed to you prior to the day)
- 💰 \$280 (incl. GST). Price includes downloadable presentation notes
- 📞 Contact the Compass Seminars team on 06 7591947 or [office@compass.ac.nz](mailto:office@compass.ac.nz)

## 3 Ways to Register:

 [www.compass.ac.nz](http://www.compass.ac.nz)

 [office@compass.ac.nz](mailto:office@compass.ac.nz)



Scan Me

## FUNDING

### **Creative Communities Scheme Fund— Hutt City Council** [See Criteria here](#)

Round 1 of our Creative Communities Scheme Fund for 2025/26 will open on October 8 2025.

**All submissions must be in by 5pm, November 8 2025.**

### **Four Winds Foundation**

Four Winds have a paper-based application that needs to be received at their office by 4.30pm on or before the last working day of the month. They are considered at the following month's meeting (generally held on the last week of each month). A maximum of four applications per applicant will be considered in any 12-month period regardless of grant outcome and only 1 application per month will be considered. [Find our how to apply here](#)

**Lottery Community Facilities Fund / Te Tahua Hapori Ngā Whakaurunga** is now open, **Closes 12 November 2025** Lottery Community Facilities provides grants: to improve or build new community facilities, or for feasibility studies to work out if plans to improve or build community facilities can be achieved and will benefit the community. <https://www.communitymatters.govt.nz/lottery-community-facilities>

**Lottery Community Fund (round 2) Te Tahua Whakatinana Papakāinga Opening 5 November 2025** Lottery Community grants may be one-off contributions or multi-year grant investments for up to 2 years, for: ☐ ongoing operating costs for existing or expanded services and activities ☐ projects beyond an organisation's day-to-day operations ☐ minor capital works projects where the total project cost is \$50,000 or less. [Find out more here](#) **Closing 3 December 2025**

### **NZCT - Always Open - Our grants criteria**

Find out what we do and don't fund for the purposes of sport, motor vehicles, salaries, social activities, advertising, and education.

See the criteria here: <https://www.nzct.org.nz/grants/>

### **The Lion Foundation**

The Lion Foundation are pleased to welcome applications for funding. Before you apply please check that you are eligible and that your project matches their [criteria](#), or [Find out more here](#)

**The Tindall Foundation** The following Programme

Areas have been identified as a focus for donations: supporting families & social services; enterprise and employment; caring for our environment and preserving biodiversity; strengthening the 3rd sector; promoting generosity and giving.

**Always open** EMAIL: [admin.ttf@tindall.org.nz](mailto:admin.ttf@tindall.org.nz)

WEB: <http://www.tindall.org.nz>

### **Wellington Venues Subsidy**

This subsidy helps local community groups hold special events in certain Council-owned venues. Applications accepted at any time - **Always Open** Decision: Two weeks after the end of the month of application Find out more [here](#)

### **DIA Funding**

<https://www.communitymatters.govt.nz/>

### **Wellington City Council Funding**

<https://wellington.govt.nz/community-support-andresources/community-support/funding>

### **Hutt City Funding**

<https://www.huttcity.govt.nz/people-andcommunities/community-funding/funding-calendar>

### **Porirua City Funding**

<https://porirua.govt.nz/services/communitysupport/>

### **Nuku Ora Funding**

<https://www.nukuora.org.nz/funding/grant-fundingoverview-for-wider-wellington-region/>

This Newsletter is produced by  
Community Networks Wellington Inc. (CNW)  
<http://www.cnw.org.nz>  
email [office@cnw.org.nz](mailto:office@cnw.org.nz)

The opinions expressed in the CNW Newsletter are not necessarily those of the CNW Committee. Every effort is made to ensure accuracy of facts and information.

However, we cannot accept responsibility for error.

**Community Networks Wellington Inc.  
gratefully acknowledge the financial  
support we receive from The  
Wellington City Council and COGS**